

“We need supports, now!”

Findings of a pragmatic implementation science study to address COVID-19 challenges in the Canadian long-term care and retirement home setting

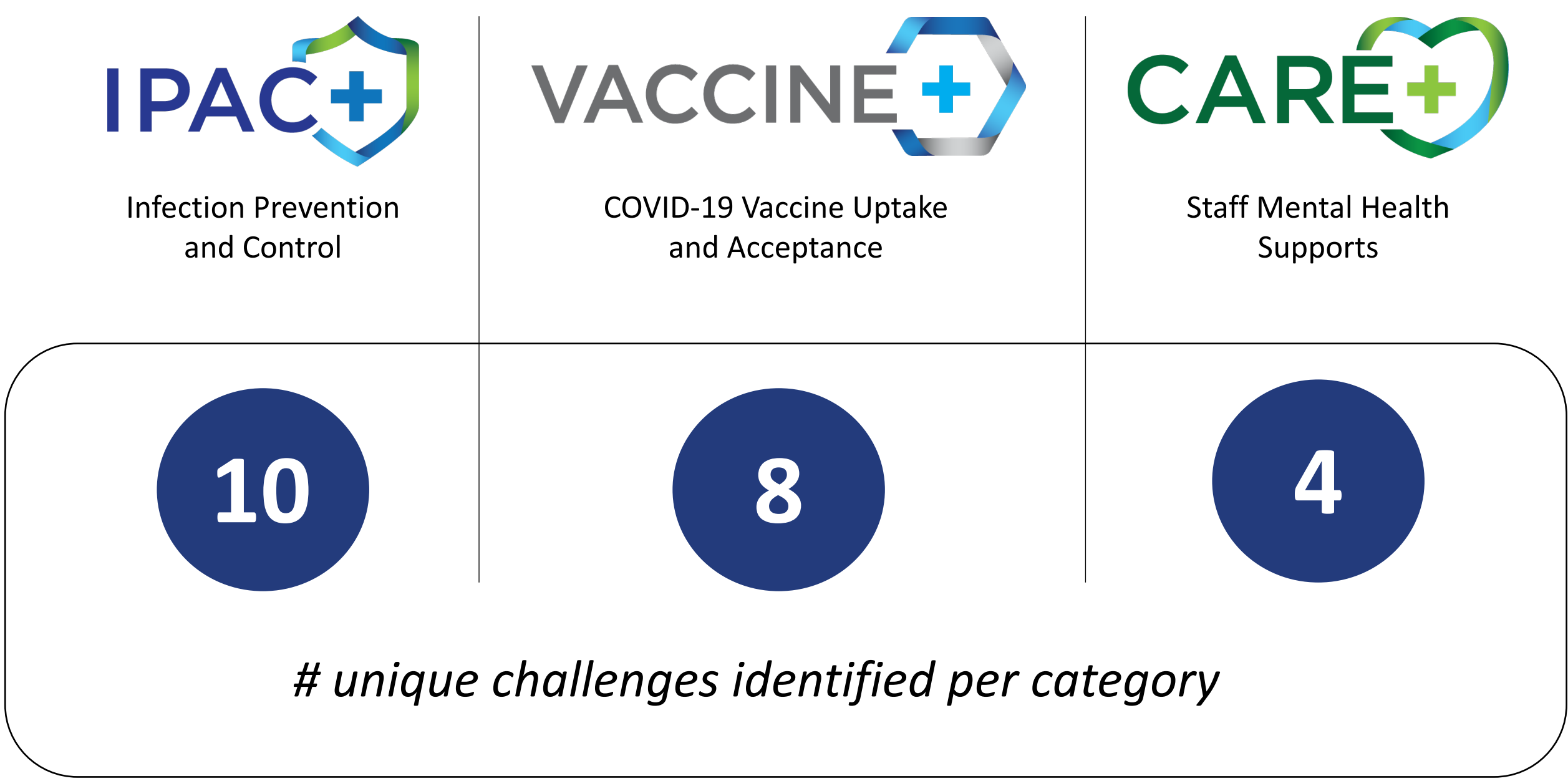


When guided by a facilitator, homes resolved

- ✓ 2X more COVID-19 challenges
- ✓ 2X more IPAC challenges
- ✓ 4X more Vaccine challenges

Results

1. The main challenge categories facing LTCH/RH



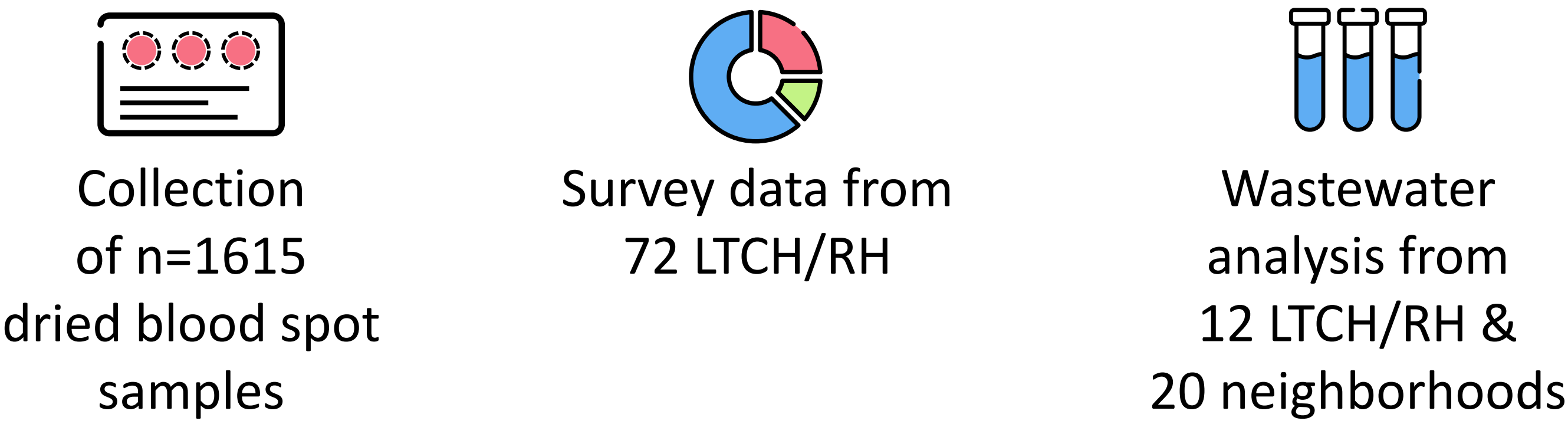
2. The mean # of challenge resolution for homes

| Mean # | Intervention | Control |
|------------------------|---------------|--------------|
| Challenges at baseline | 11.7 (SD 2.3) | 9.6 (SD 1.5) |
| Challenges resolved | 6.1 (SD 1.9) | 2.5 (SD 1.9) |

3. The rate of challenge resolution for intervention vs. control homes

| Challenges | Rate of Resolution | CI | p-Value |
|--------------------|--------------------|-------------|---------|
| Overall challenges | 2.02 | 1.50 – 2.70 | <0.0001 |
| IPAC | 1.85 | 1.25 - 2.73 | 0.0020 |
| Vaccine | 3.78 | 1.97 – 7.25 | <0.0001 |
| Mental Health | 1.36 | 0.75 – 2.46 | 0.3182 |

4. Facilitated an immunity study that advanced SARS-CoV-2 understanding and monitoring, and contributed to the Canadian vaccine schedule

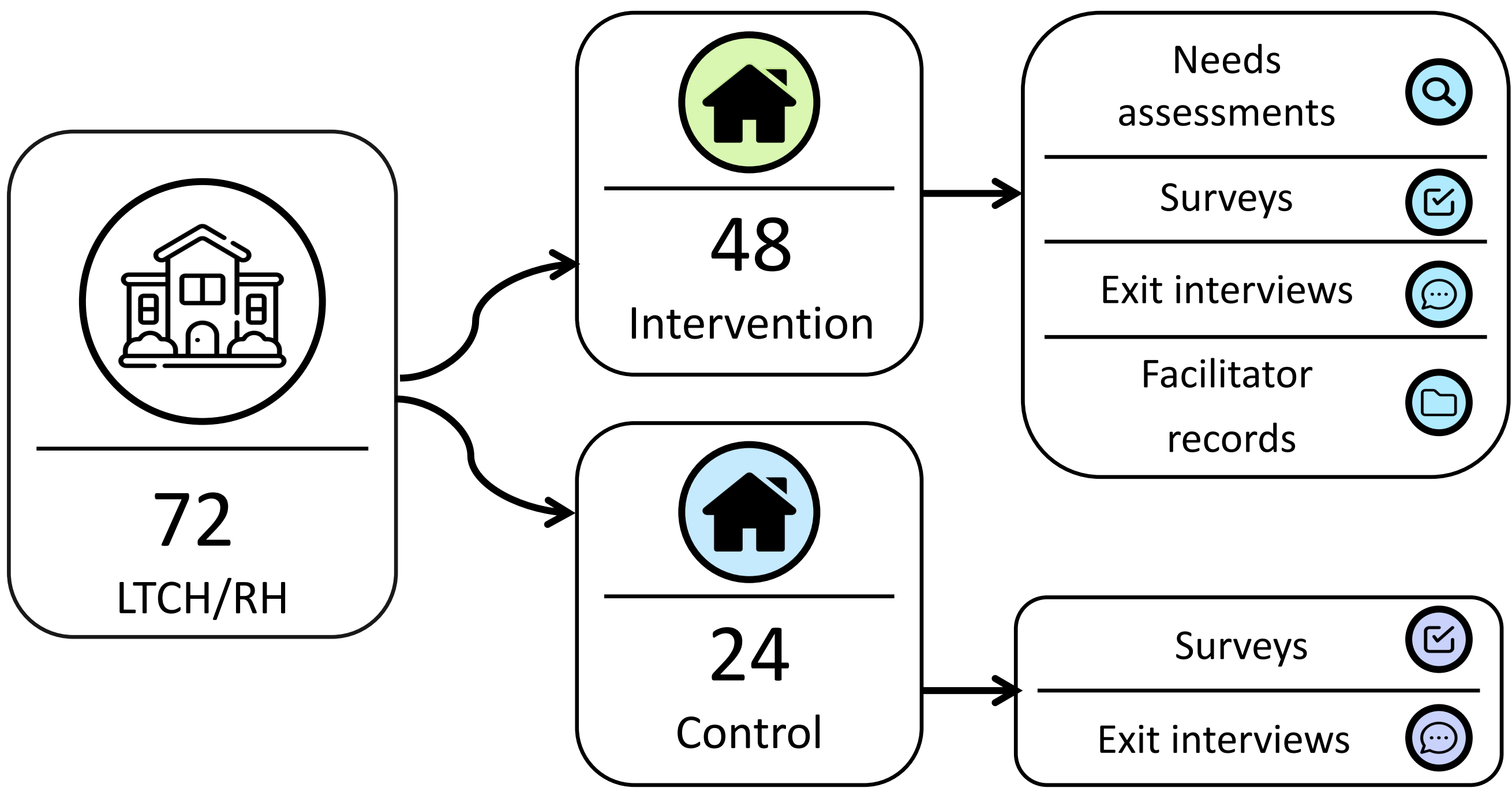


Mixed Methods Study

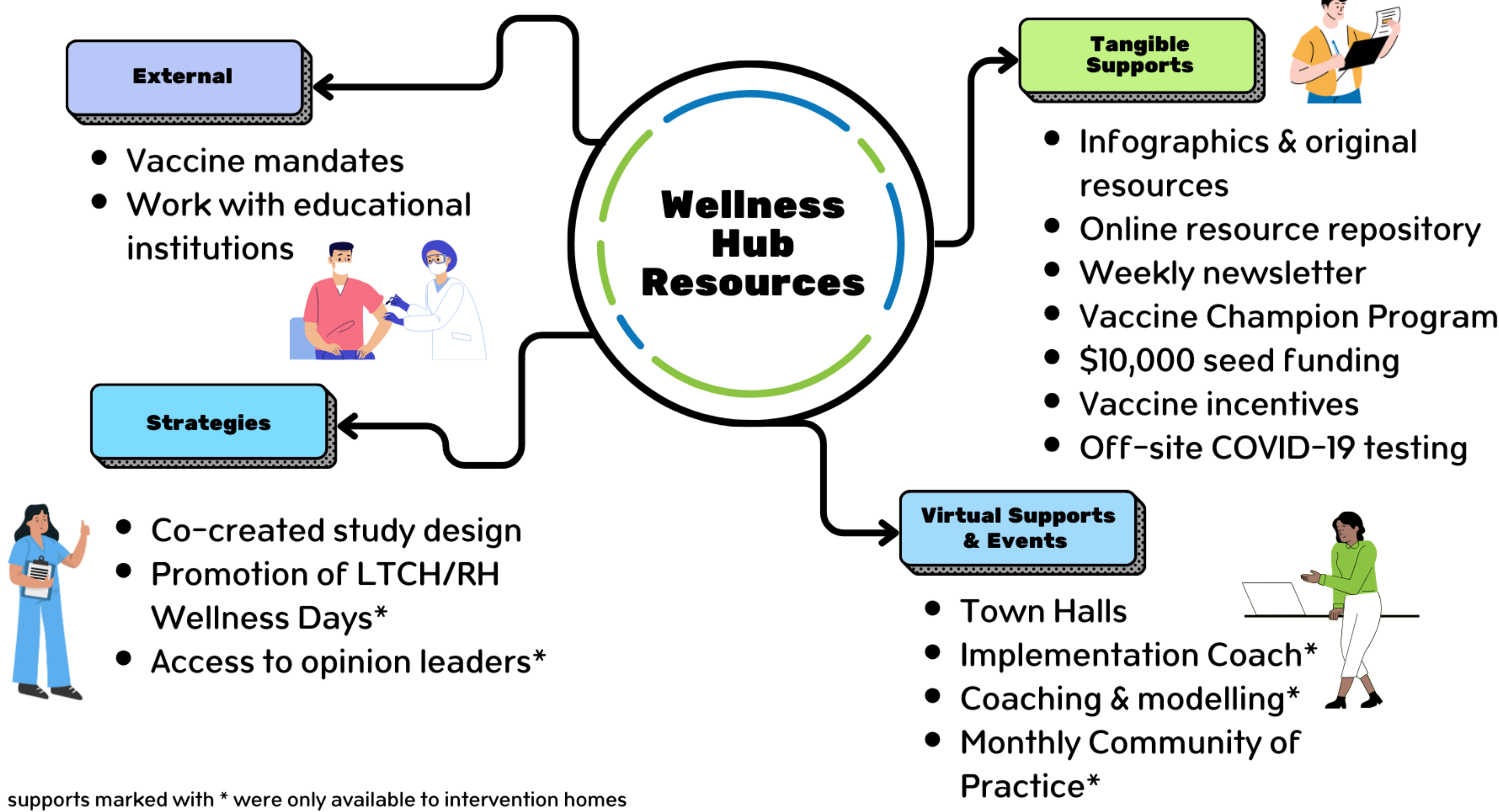
Implementation

Immunity

Methods



Data sources for intervention vs. control homes



Complete list of Wellness Hub supports

Limitations: (1) Selection Bias; (2) Due to the co-creation nature of our study design, data from needs assessment interviews may have led to interventions more tailored to intervention home needs; (3) Challenges may have resolved independently of WH supports



Christine Fahim, Jamie M. Boyd, Vincenza Gruppuso, Ana Mrazovac, Jessica Firman, Claire Gapare, Vanessa Bach, Nimitha Paul, Rosane Nisenbaum, Alyson Takaoka, Keelia Quinn de Launay, Sharon E. Straus



Funded by: COVID-19 IMMUNITY TASK FORCE GROUPE DE TRAVAIL SUR L'IMMUNITÉ FACE À LA COVID-19